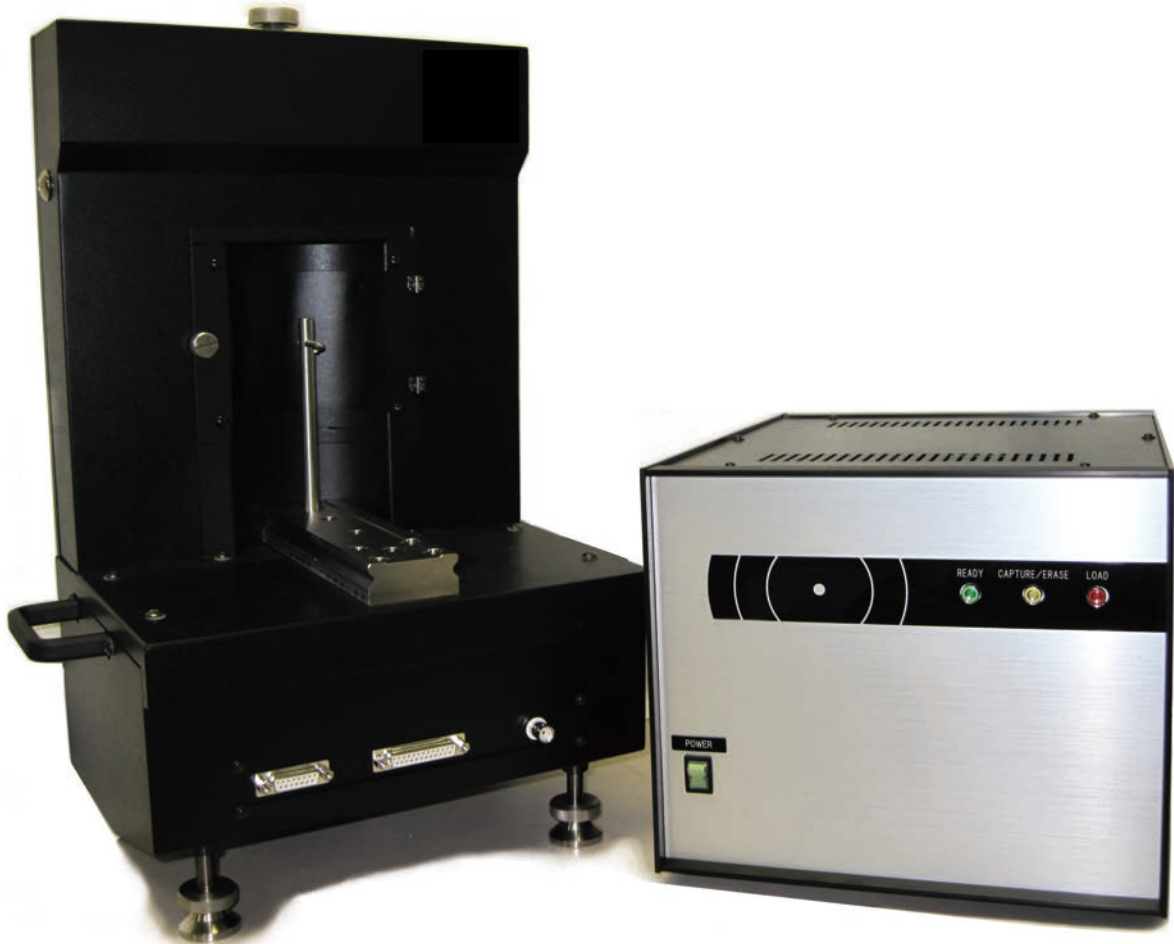




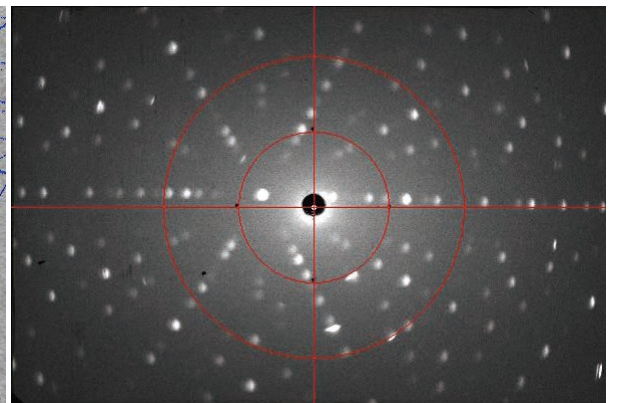
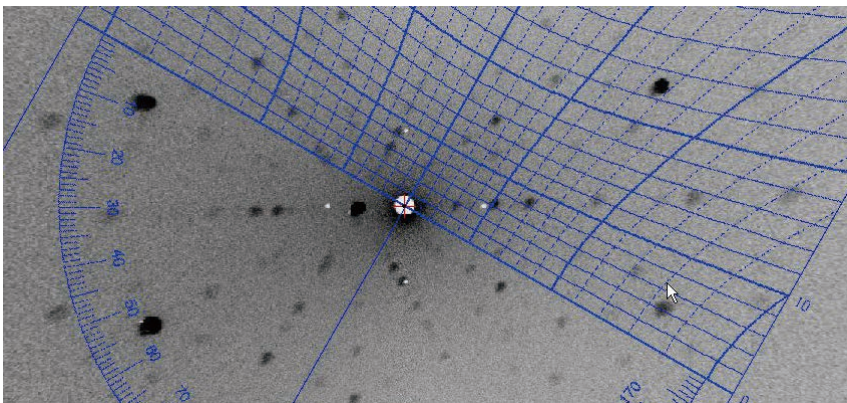
IPX-LC

X-ray diffraction Back Laue Camera with Imaging Plate Reader

Automatic



Combined IP reader



Easy to switch from Polaroid and X-ray Film

	Items	Models	Remarks
Spec	Camera Dia.	114.6mm	1°=1mm
	IP Size	8cmx12cm	(After convert 8cmx24cm)
	Pixel Resolution		50um,100μm,200m
	Reading Time	app. 2min.	
	IP Erasing Time	app.1.75min.	
Contents	MainBody	IPX	Combined IP Reader
	ControlBOX	IPX-CON	Installed Outside
	IP Size	IPX-IP120C	For 8cmX12cm,Detachable
	Collimater	IPX-Co05	φ0.5,Combined IP Cassette
	PC(Optional)	IPX-PC	OS Windows 10
	Cables	IPX-CA	Com.cable,Position View
	Centering Jlg	IPX-CEN	For Sample Position View
	Fluorescent screen	IPX-FL	For X-ray Line View
Softwares	Imaging Reader Software	IPX-Ray	AutoConverting with Sample Distance
			Negative/Positive View
	Orientearing Software	IPX-Converter	γ 、 δ Angle Calculation
			Drawing of Greninger Chart,Print
Installation Condition	PowerSupply	AC 100V-240V 50/60Hz 90W(without PC)	
	Mainbody Dimensions&Weight	266mmx360mmx500mm/27kg	
	ControlBOX Dimensions&Weight	260mmx330mmX330mm/6kg	
	Packing Dimensions&Weight	980mmx640mmx520mm/49kg	



IPX Co.,Ltd.
 Representative Director Toshiyuki Shimura
 2-9-5 Koufuudai Toyono-chou Toyono-gun Osaka
 563-0104 Japan
 TEL: +81-72-734-6867 eFAX: +81-6-7635-9105
 E-mail: t-shimura@ipx-laue.com
 URL: <http://www.ipx-laue.com/>

